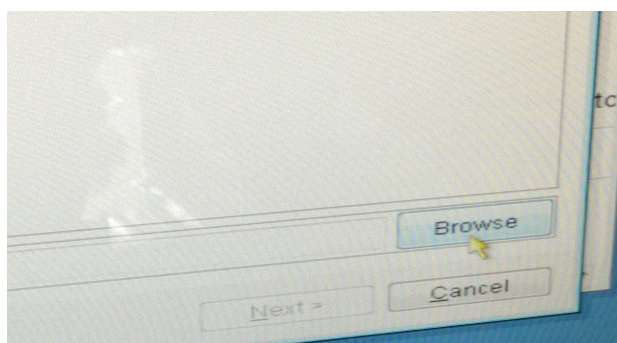
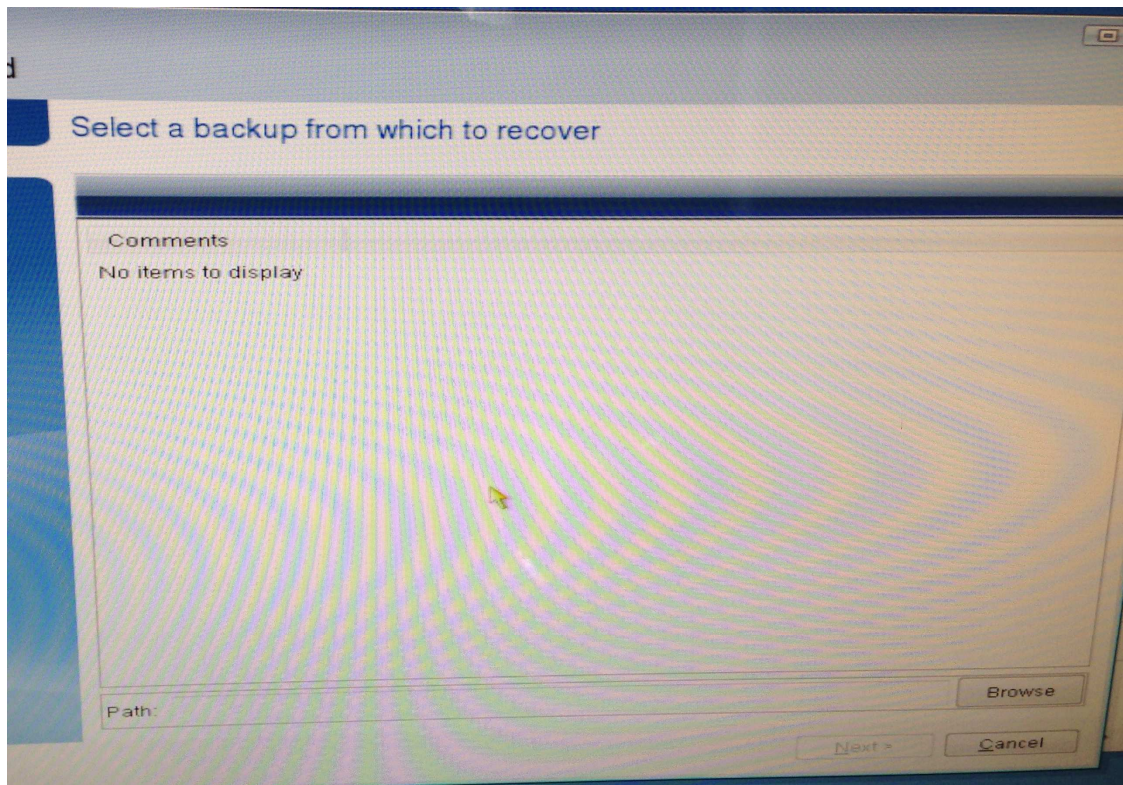
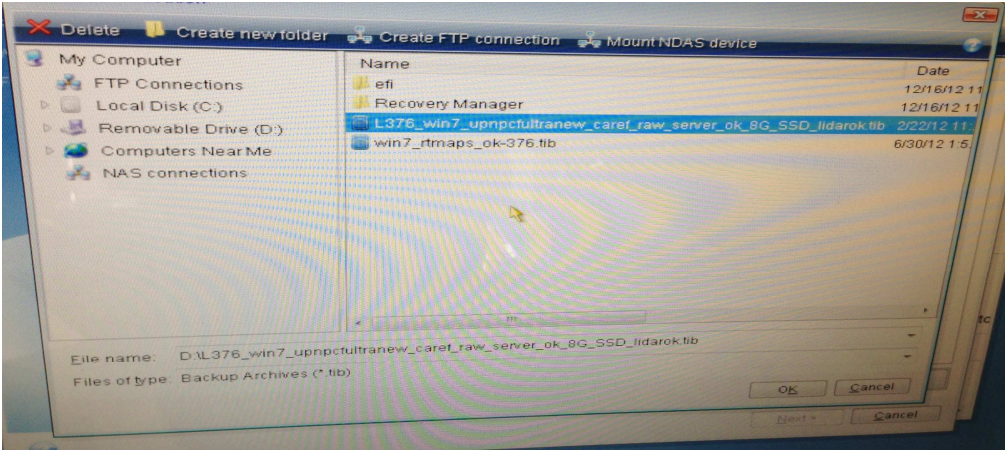
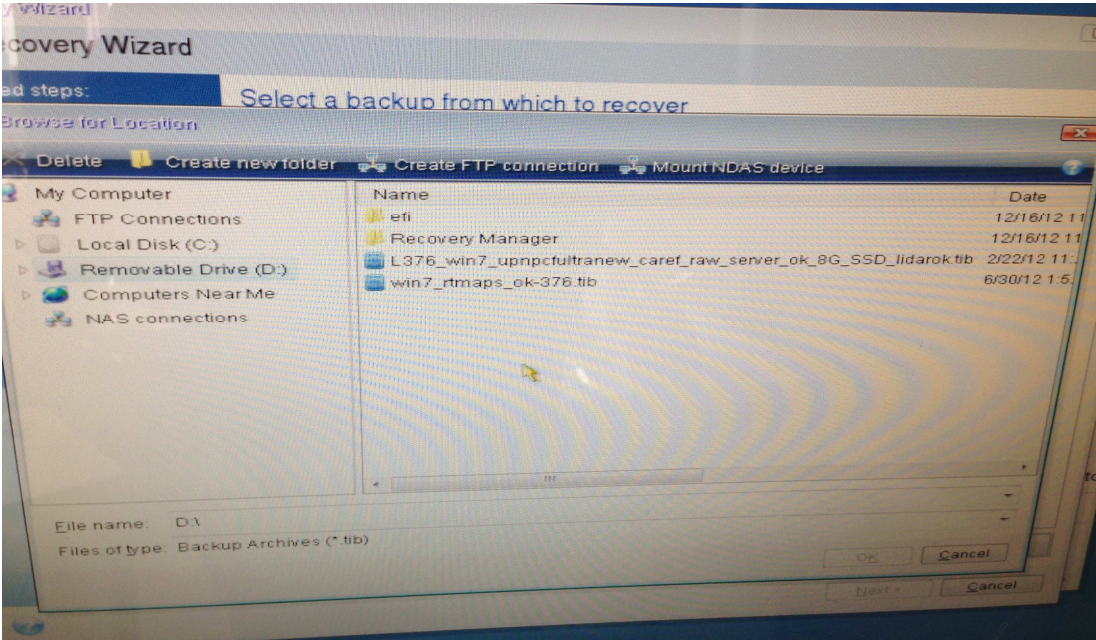
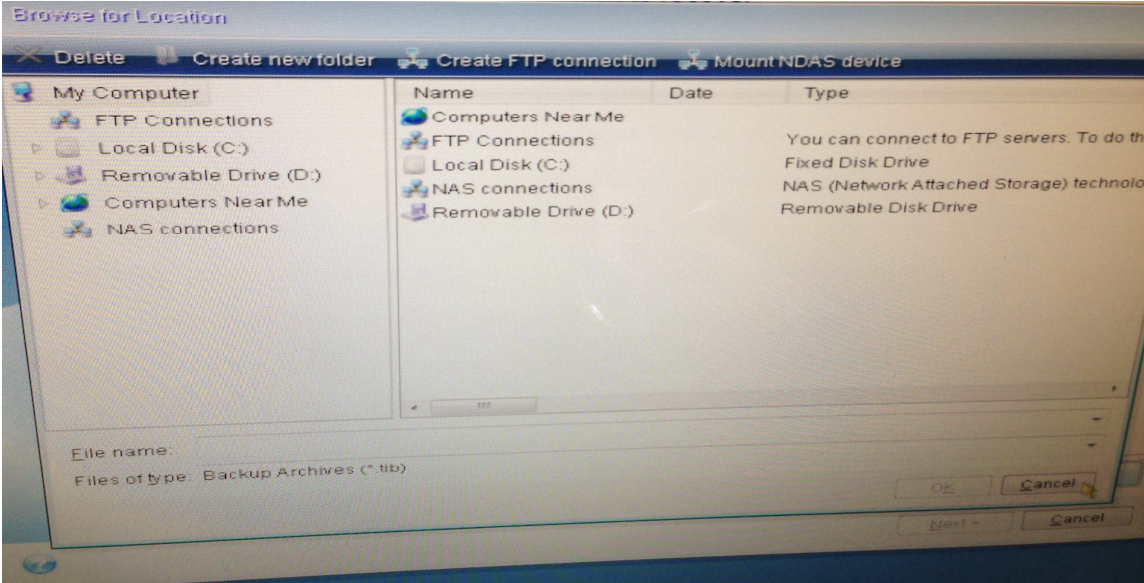
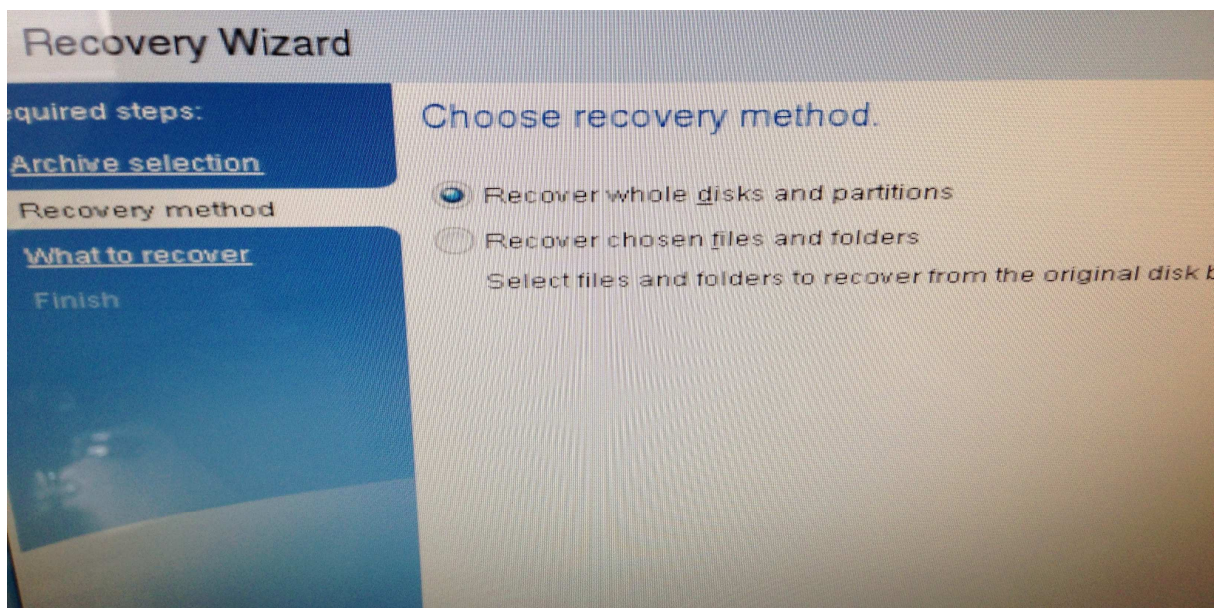
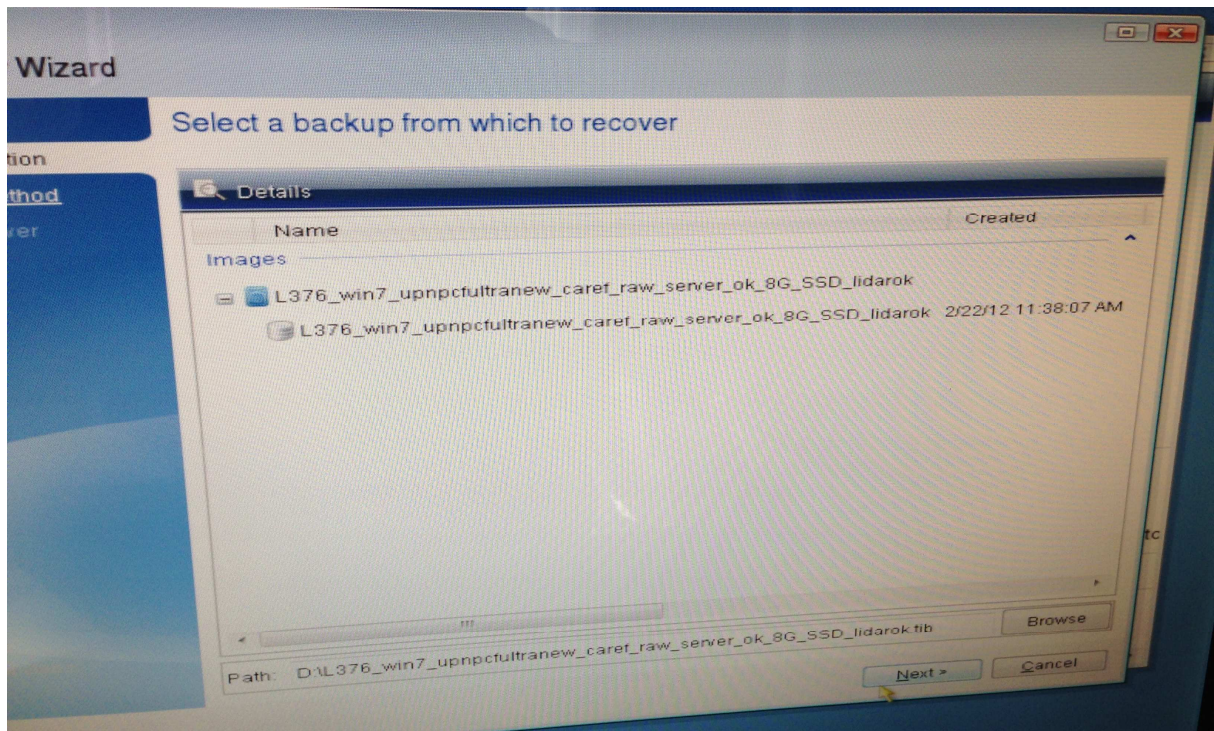


5) Browse for the image to recover

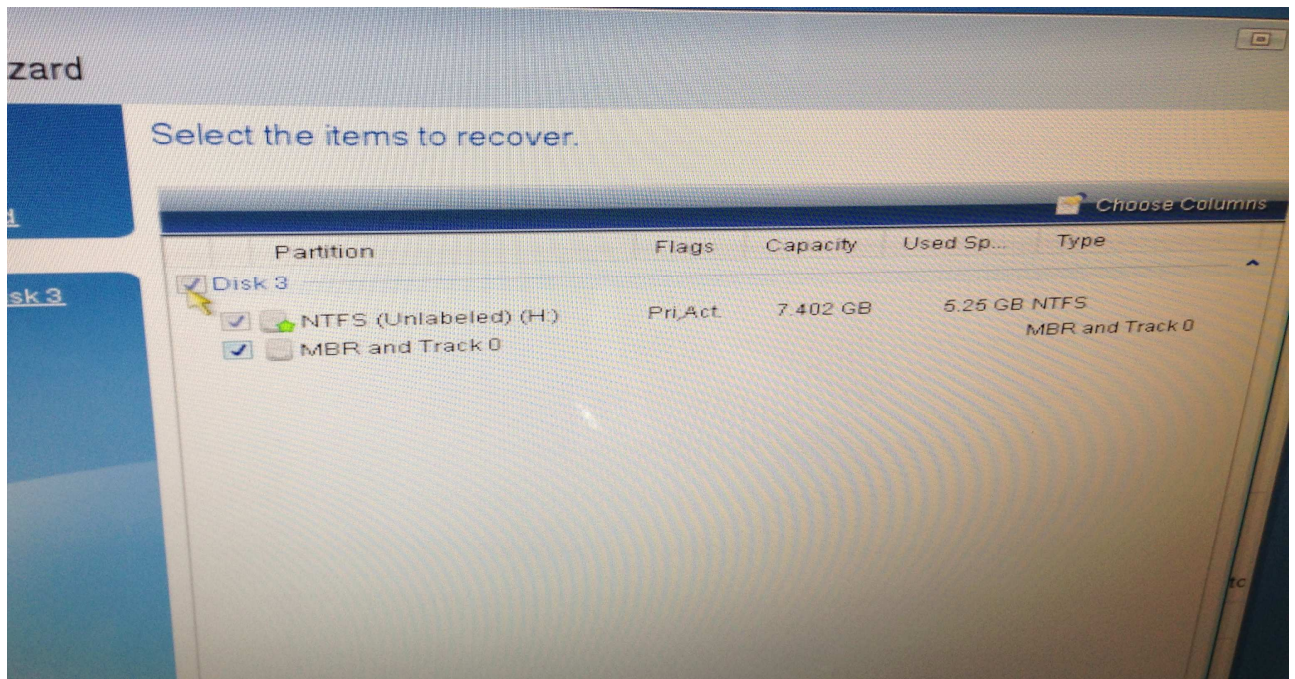


6) Select drive where the windows or linux image is (\*.tib )  
by default it is on the USB key D: , if not get it from [www.wifibot.com](http://www.wifibot.com)

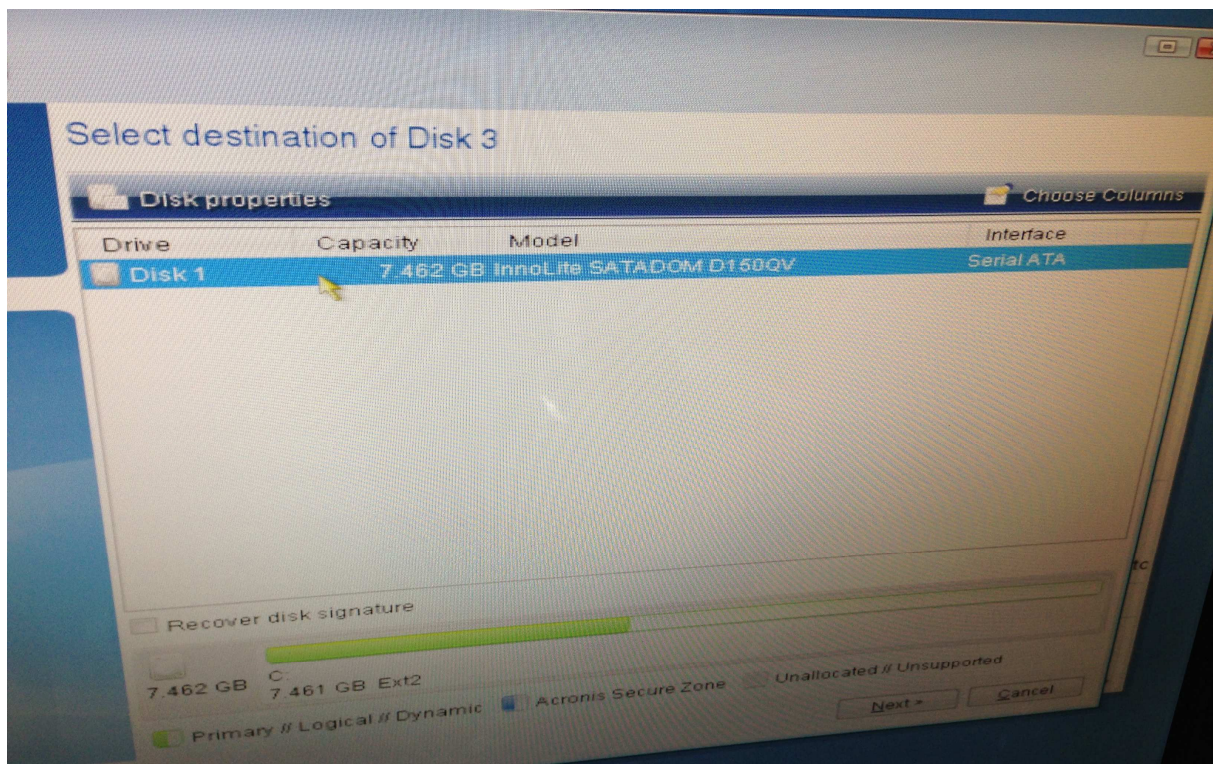


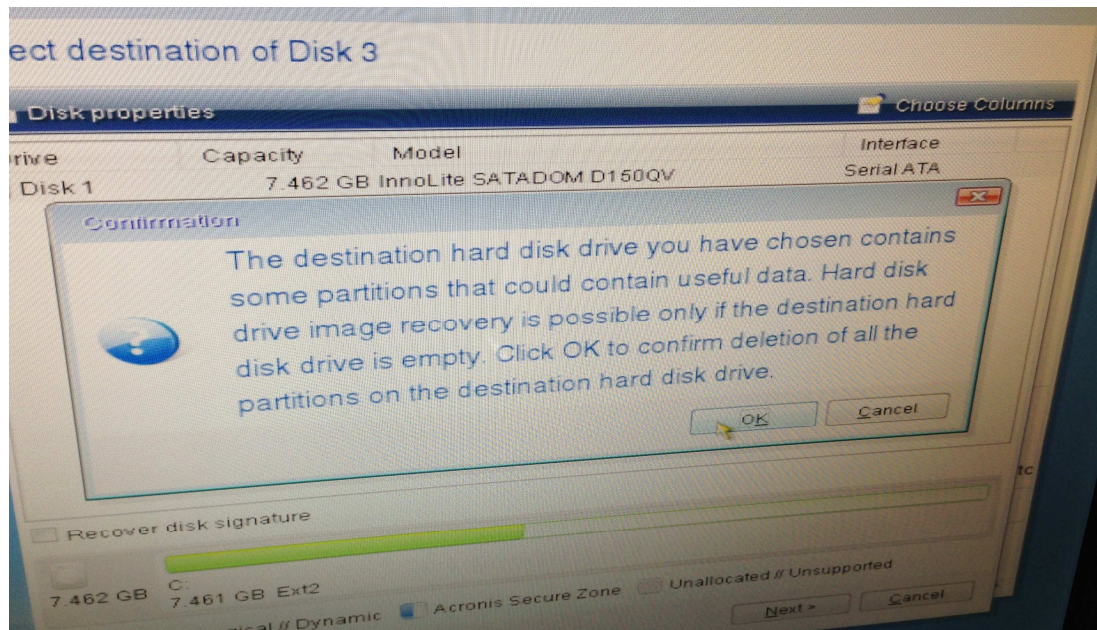


7) Select all partition to recover

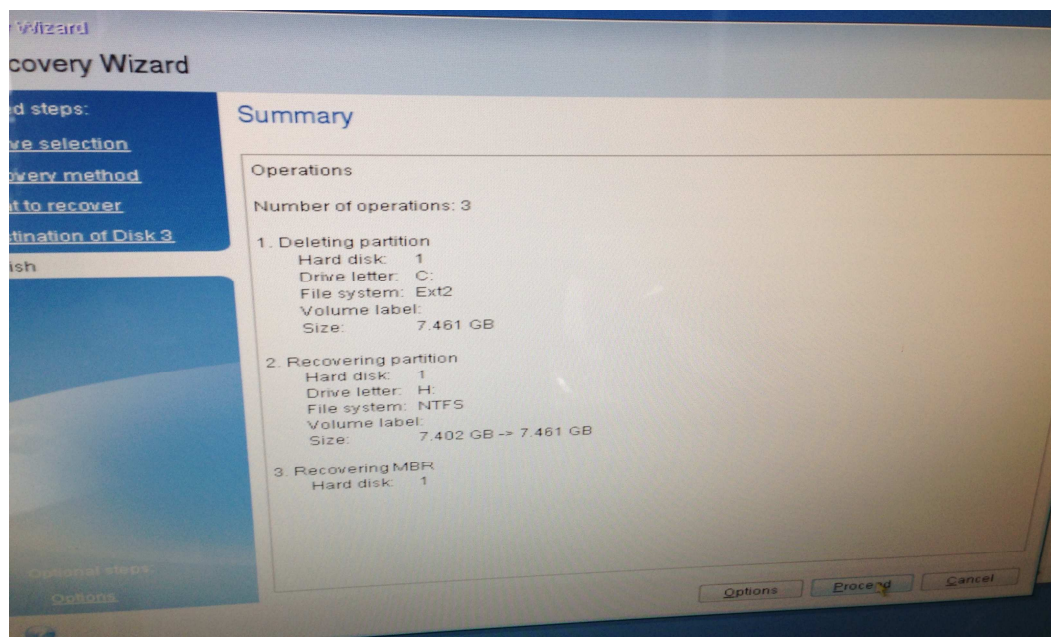


8) Select drive where you want to restore (compact flash or satadom ssd)

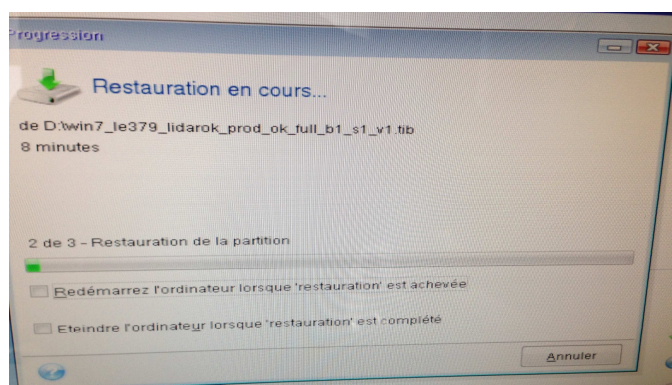




### 9) Start the recovery



### 10) Wait until it finish and reboot pc



## How to restore WIFIBOT operating system from a PC

Install acronis true image on a pc, plug your compact flash or ssd hard drive, using an usb adapter to your pc. Follow the same instruction to restore the image.

On a pc you can create your own USB recovery key.

**For this method please read acronis manual**

